

# Height-Adjustable Solutions



# Adjust. Refresh. Feel Good.



Adjustability has been an emerging trend in office furniture for over 20 years. Finally, it's actually going mainstream. Why? The implications on healthcare costs. The disruption and cost of employee absenteeism. And new, cost effective solutions like Enwork's portfolio of height-adjustable table bases and benching environments.

Come In. Be inspired.



Facility Adjustable Tables	04
Crank Adjustable Tables	05
Pneumatic Adjustable Tables	06
Electric Adjustable Tables	07
Grid XTB Linked Adjustable Benches	09
Lecterns and Command Centers	13
Articulating Monitor Arms	14
Complementary Products	15

Medical studies consistently tell us that we need to be active to keep the blood flowing. Sitting in the same position – hour after hour, day after day – is unhealthy. But you knew that. You can only adapt so much to your work environment. Instead, it should adapt to your needs, your size, your shape. That’s why height-adjustable work-surfaces need to be part of your office environment. The time is now.

# Facility Adjustable Tables

**HEIGHT RANGES:** IMPRESSION SET SCREW ADJUSTABLE 29" - 43" WITH 1.5" INCREMENTS (INCLUDING TOP). SENSATION AND VALUE PIN ADJUSTABLE 26" - 35" WITH 1" INCREMENTS (INCLUDING TOP)

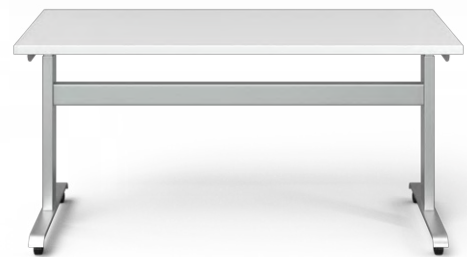
Be sure your space looks great and works well. Design Matters.



Value pin adjustable straight legs are available with levelers or locking casters.



Sensation pin adjustable table legs are available in three styles: T-legs, C-legs or Y-legs. Each is available for tables 18" - 30" deep with levelers, black casters.



Impression set screw adjustable legs are available in numerous configurations including Flip Table bases. Some offer cross beams for additional stability. Select from T-legs, C-legs, and straight legs with levelers.

# Crank Adjustable Tables

HEIGHT RANGES: 28.5" - 46.5" (INCLUDING TOP)

Changing between sitting and standing positions burns calories, maintains muscle tone, and helps keep you alert. Compelling reasons to invest in your future.



Impression crank adjustable T-leg table bases are available for 24" or 30" deep tops, 60" or 72" wide. A 3-legged, 120-Degree base is also available.

Impression 3-legged crank adjustable table bases can be used to create a complete, height-adjustable workstation. The crank handle can be fitted to the T-leg on either end for convenient user control.



# Pneumatic Adjustable Tables

HEIGHT RANGE: 27" - 45" (INCLUDING TOP)

The human body is designed to be in motion. That's why being in one position for long periods of time is uncomfortable. Even with an ergonomic chair, after a while your back tells you to change positions.



Also known as counterbalance or gas cylinder tables, pneumatic table bases provide quick, individual adjustment without concern for power access. Impression pneumatic adjustable table bases feature an attractive flat foot design that blends with any office environment.



Ideal as a companion table, Impression pneumatic adjustable X-bases are available for round tops from 24" - 48" and square tops from 24" - 42".



# Electric Adjustable Tables

HEIGHT RANGE: 22.6" - 48.3" (INCLUDING TOP). MEETS OR EXCEEDS ANSI BIFMA STANDARD.

Knowledge workers drive the American economy. They come in all shapes and sizes. A typical US male is 5' 9" tall. A typical female is 5' 4". Fixed height worksurfaces are typically 29" high. Are all your employees typical?



Impression XT-Series electric adjustable table bases provide quick, individual adjustment. With an Ansi/BIFMA range of 22" - 48", they can be used with chairs, stools, or as a standing height table.



Impression electric height-adjustable C-leg bases are available for workstations up to 96" x 96" wide. 120 degree electric bases are available with straight feet (below) or angled feet (not shown).

With a Bosch® motor in each precision-manufactured leg, XT-Series tables provide the durability and smooth operation you expect, unlike bargain basement imported bases. Quality matters.

A programmable digital display is optional.

Integrate Impression electric tables with freestanding Grid frames for a highly functional workspace that provides unparalleled flexibility for reconfiguration.





# Grid XTB Linked Adjustable Benches

Leveraging Grid's flexible, modular and modern aluminum frame to manage power and data is one reason why XTB benches are a compelling solution. Affordability is another. Users matter. Budgets matter.



Choose one of three frame heights, with or without end panels and optional glass or acrylic topper screens. Complete your application with Landscape storage components and Apex mobile peds.

Built from a collection of components, Grid XTB is a terrific “Day 2” product that is easy to reconfigure, expand, or split apart. Considering that typical benching products are monolithic boat-anchors, and the only ergonomic aspect of most benching applications is the task chair, Grid XTB height-adjustable workstations make sense.



Grid XTB benches can be configured — and reconfigured — into 2, 3, 4, 6, and 8-packs, or larger. Single frame workstations can be 48" - 72" wide with 24" or 30" deep worksurfaces. Extended corners and 120 degree applications are also available.



Back-painted glass worksurfaces and stain etched glass topper screens add character to this upscale application in St. Louis. Using both silver and white provides wayfinding in a 100+ workstation environment.



Incorporating woodgrain end panels warms up the neutral palette in this Oklahoma City office application. For additional convenience they included Assemble clamp-on power/data units on the worksurface of select stations.





Utilizing height-adjustable Grid XTB allows this Northern California company to provide their employees an ergonomic workspace while also leveraging the real estate savings of high density benching.



With lots of storage and a shared table for collaboration, these Chicagoland workstations show that Grid XTB benching solutions can be welcoming and highly functional.

# Lecterns and Command Centers

HEIGHT RANGES: PIN ADJUSTABLE 34" - 46" WITH 1.5" INCREMENTS, PNEUMATIC ADJUSTABLE 34" - 46".

The need for ergonomic, adjustable height furniture extends beyond worksurfaces. Enwork offers multiple height-adjustable solutions for education and training environments. How can we help you?



Articulating Lecterns (24" wide) and Command Centers (34" and 66" wide) are available with basic cabinets or tech cabinets which include rack rails, locking rear door(s), and extra vent holes. Choose fixed height, pin adjustable, or pneumatic adjustable models.



# Articulating Monitor Arms

VERTICLE RANGE: +/- 5.2°    HORIZONTAL RANGE: 18.6°

Take your solution to the next level with fully articulating monitor arms. Details matter.



EVO fully articulating monitor arms feature a counter balance mechanism for quick, easy adjustment. Single and dual arm applications support monitors up to 20lbs.



# Options to Complete Your Application

Enwork offers a wide variety of privacy and storage components to complete your application. Just a few of the many options are shown below.

## Privacy Screens & Modesty Panels



Clamp-on Screen



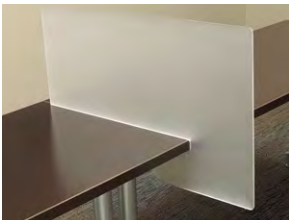
2-sided tackable screen



Laminate screen with optional tackboard



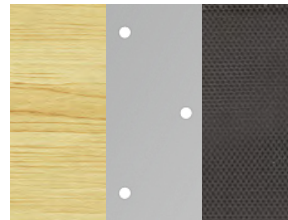
Aluminum frame screen, acrylic or fabric



Pac-Man screen, acrylic



Pac-Man screen, laminate



Laminate, perforated steel and mesh modesty panels



Acrylic, Etched Glass, and Glass Whiteboard Topper Screens

## Storage



Apex Mobile Ped



Apex Mobile Ped with cushion and tote pull



Landscape ganged box-lat and bookcase with Axil-Z power/data



Landscape personal cabinet on casters



Landscape ganged personal tower and box-lat

Need additional power and data access? Tired of the under desk spaghetti? Complete your height-adjustable application with some of these convenient accessories.

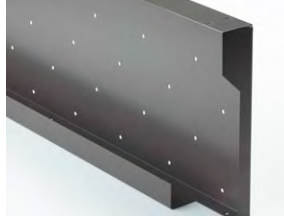
### Power/Data & Computer Accessories



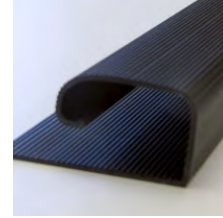
Assemble clamp-on



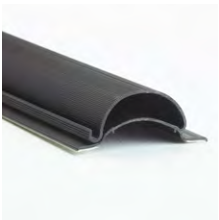
Axil-Z



Perforated steel modesty with trough



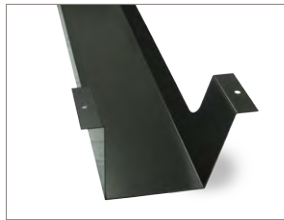
J-channel cable manager



PDU/CM Cable Manager



Cable gripper



Steel trough



Vertical cable manager



CPU holder



Adjustable Keyboard Shelf

